

雲林縣廉使國小(CHY002)

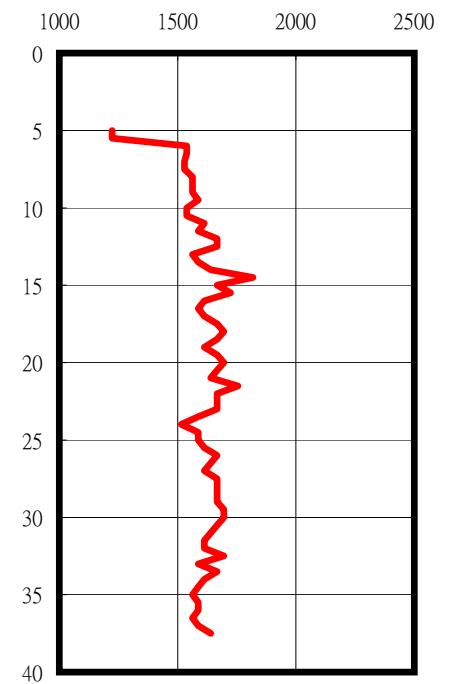
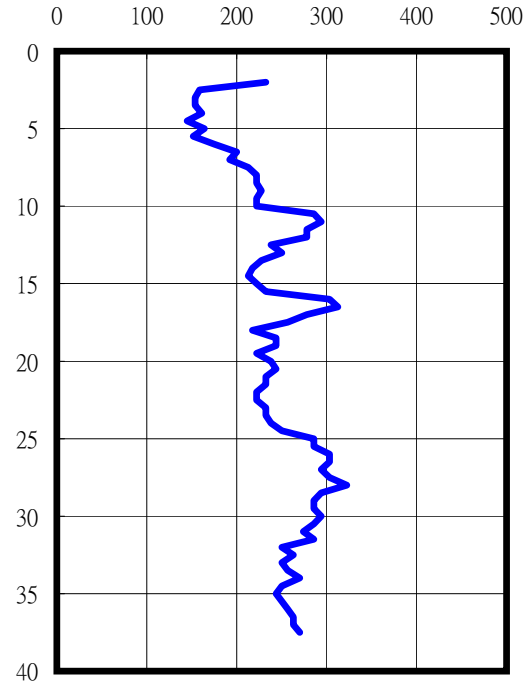
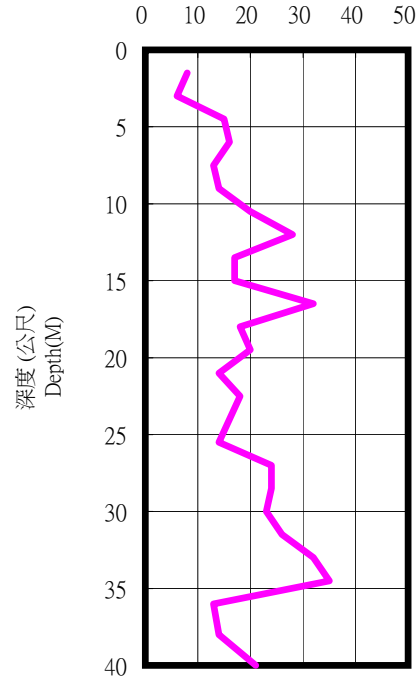
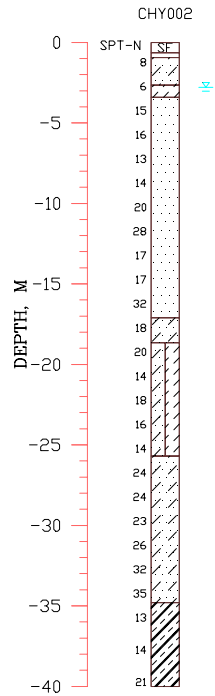
TM2

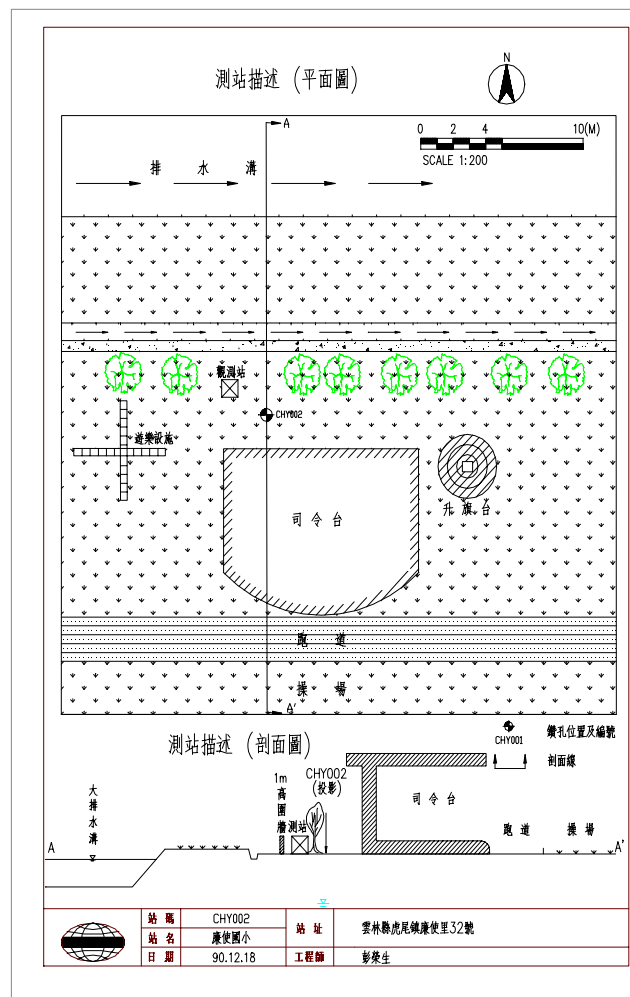
190074.0000 2624066.0000

SPT-N

S-Wave (m/sec)

P-Wave (m/sec)





- 1.本測站位於校園內正北方(操場司令台後側),緊鄰圍牆約一米高.
- 2.圍牆外側有寬約0.5米的水泥道和排水溝.