

嘉義縣排路國小(CHY005)

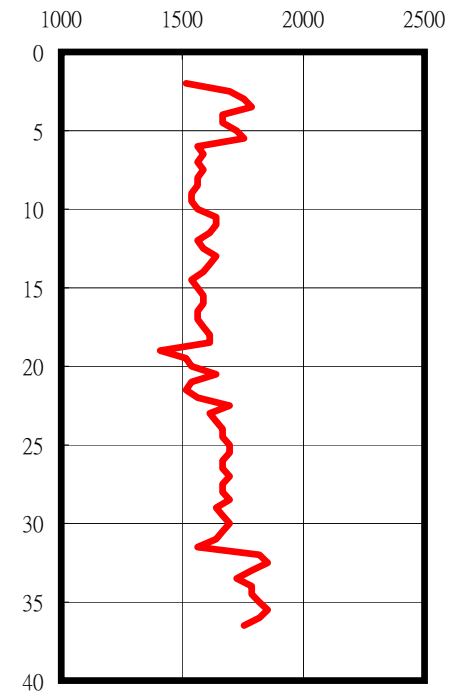
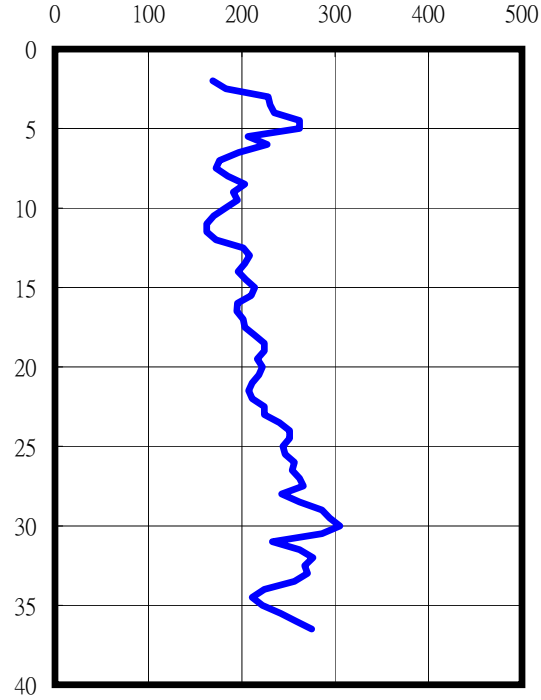
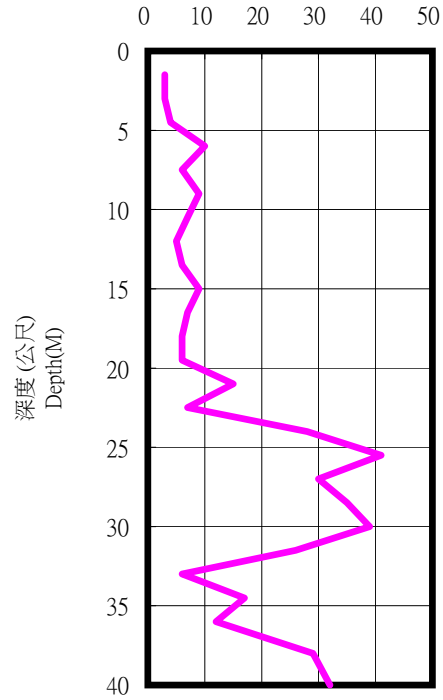
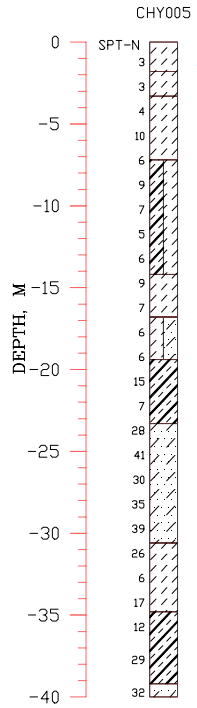
TM2

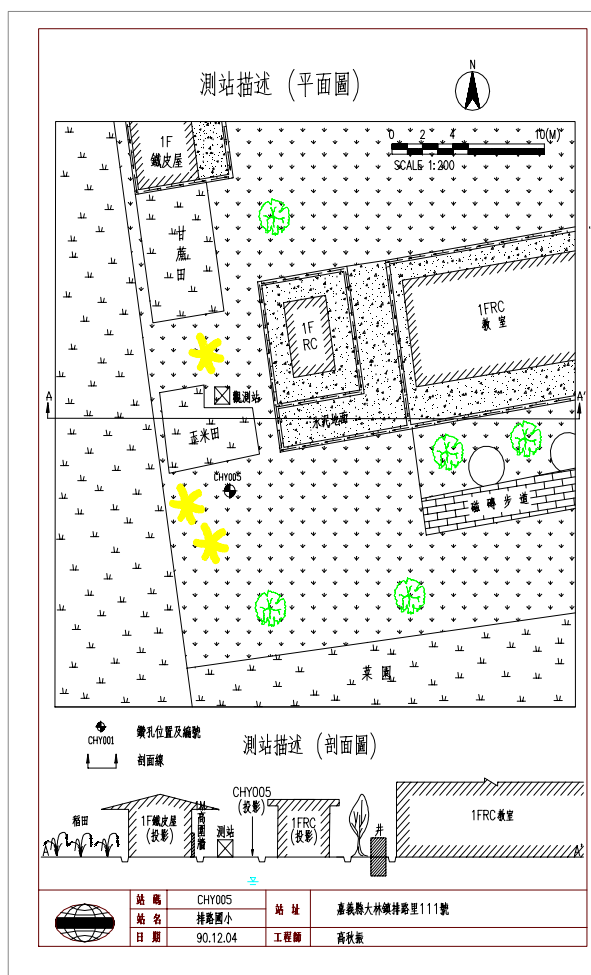
190150.0000 2612149.0000

SPT-N

S-Wave (m/sec)

P-Wave (m/sec)





1. 本測站位於校園內西南側，緊鄰圍牆(約一米高)，圍牆外是稻田，校內建築物(包括RC及鐵皮屋)，皆一層樓高。
2. 因測站北方有樹木甘蔗田擋住，無法進機，右南方有玉米田，未免破壞校內環境，因此決定再往南下移約2米。