

台南縣白河國小(CHY015)

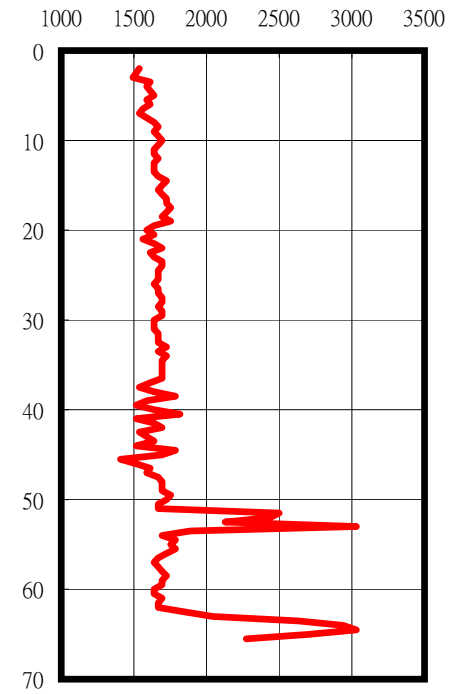
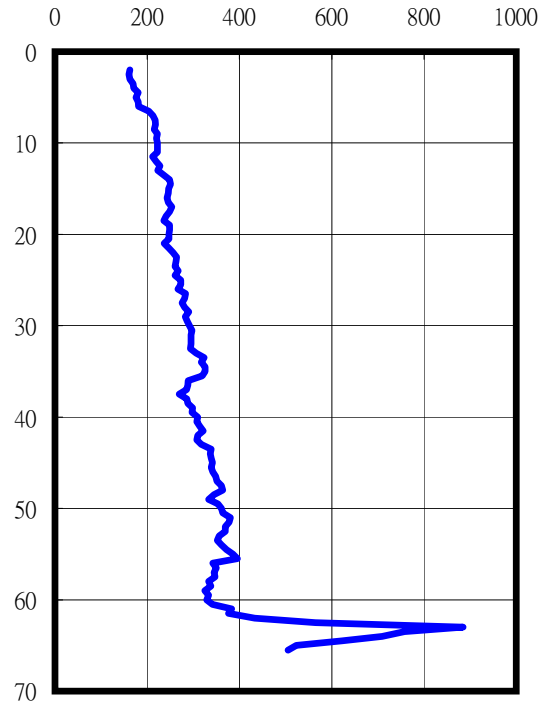
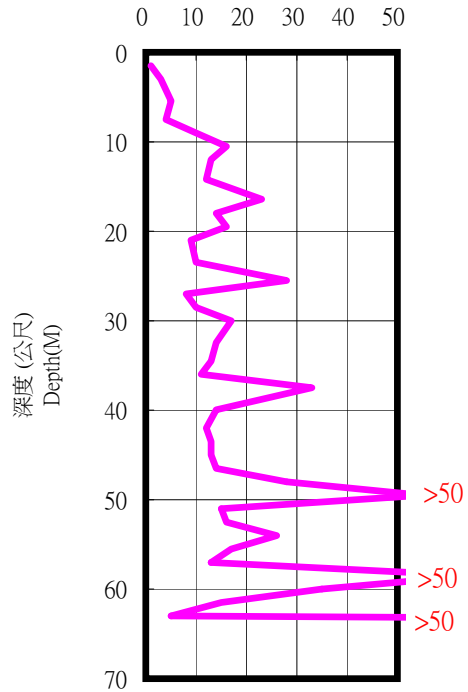
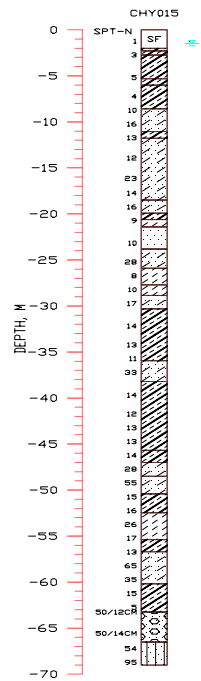
TM2

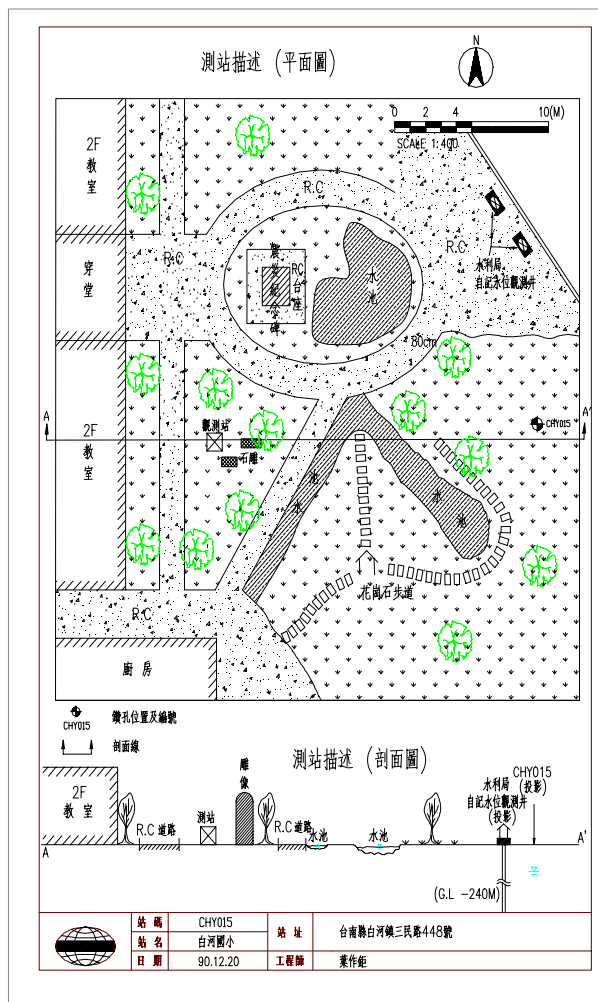
189350.0000 2583683.0000

SPT-N

S-Wave (m/sec)

P-Wave (m/sec)





1. 測站位於學校東側之花圃內, 旁有雕像數座.
2. 測站西側約12米為二樓教室, 東側約40米為鑽孔.
3. 測站東北測15米為嘉南地區一一八震災紀念碑.