

雲林縣秀潭國小(CHY031)

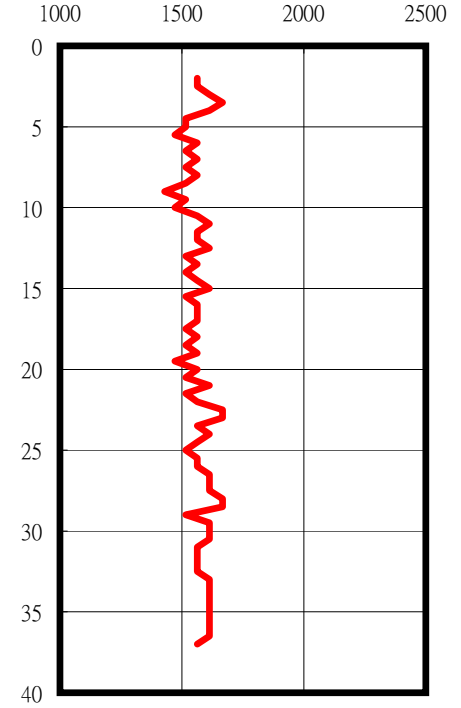
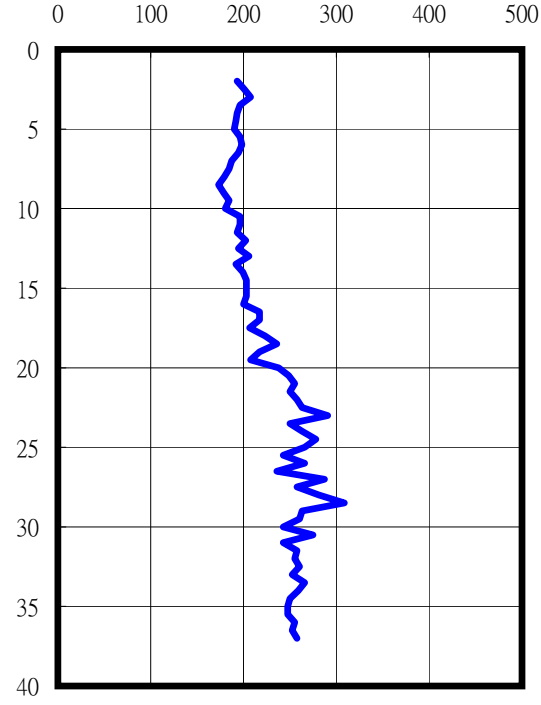
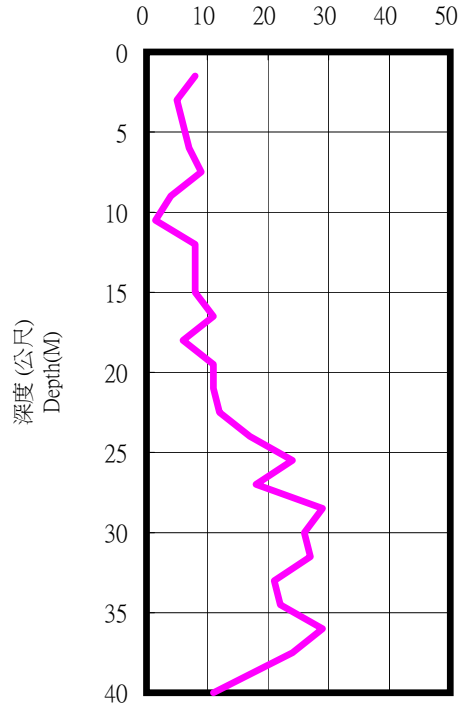
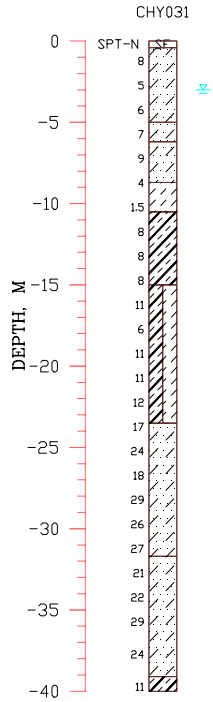
TM2

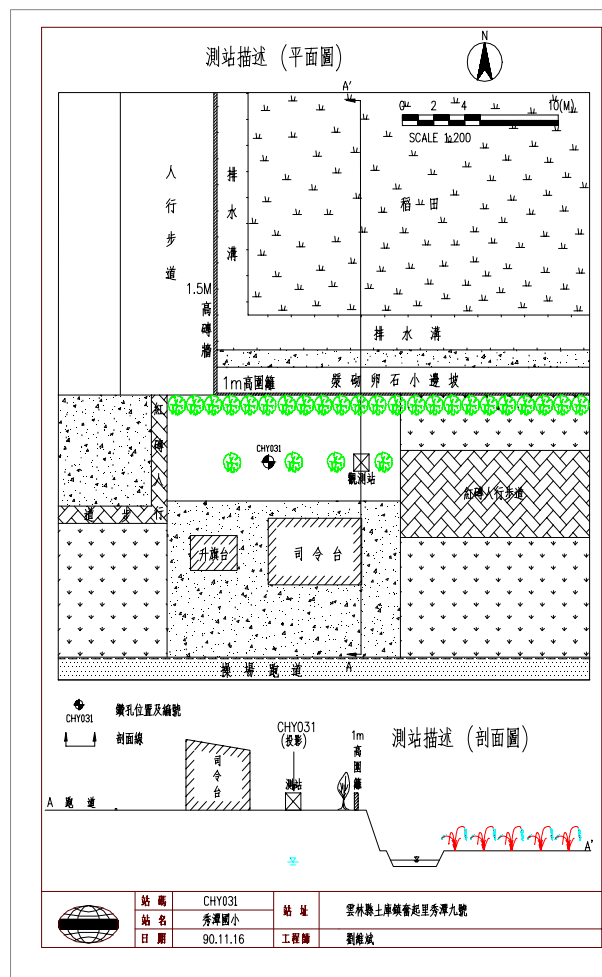
182815.0000 2617443.0000

SPT-N

S-Wave (m/sec)

P-Wave (m/sec)





1. 1.5米磚牆牆腳與排水溝水面之高程差約3.5米.

2. 1米圍籬牆腳與排水溝水面之高程差約3米.

3. 排水溝水深約30-40公分.