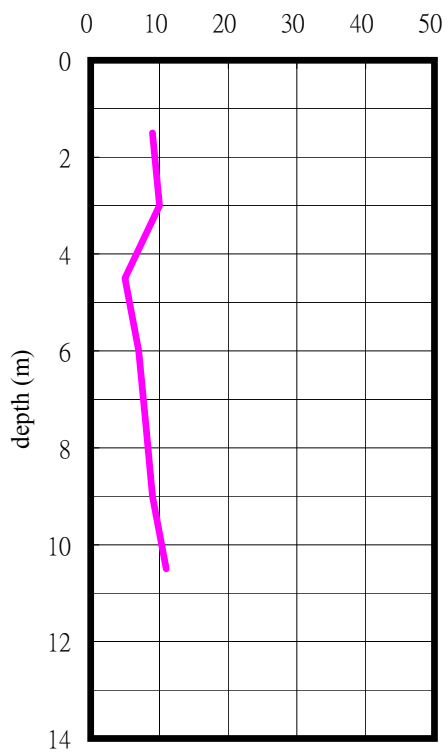


嘉義嘉北國小(CHY047)

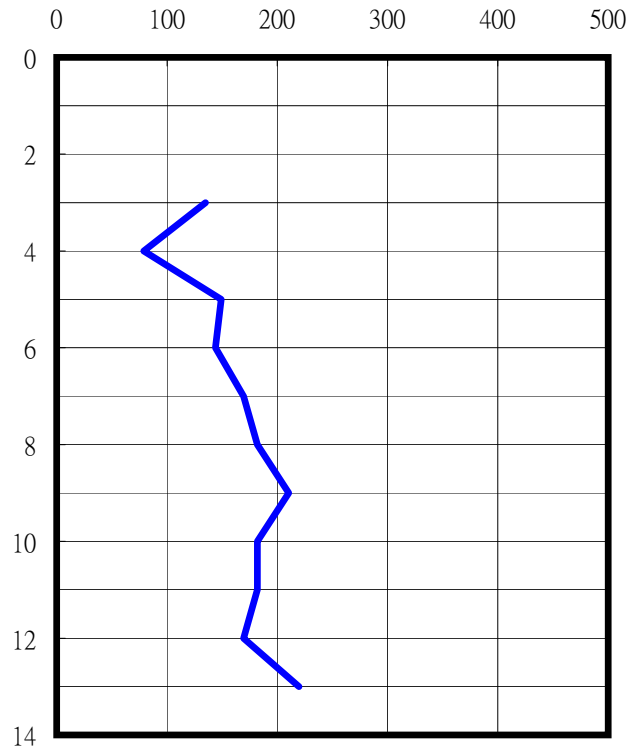
TM2

193535.6726 2599196.7988

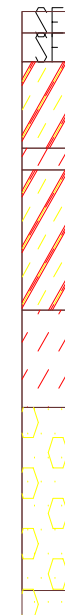
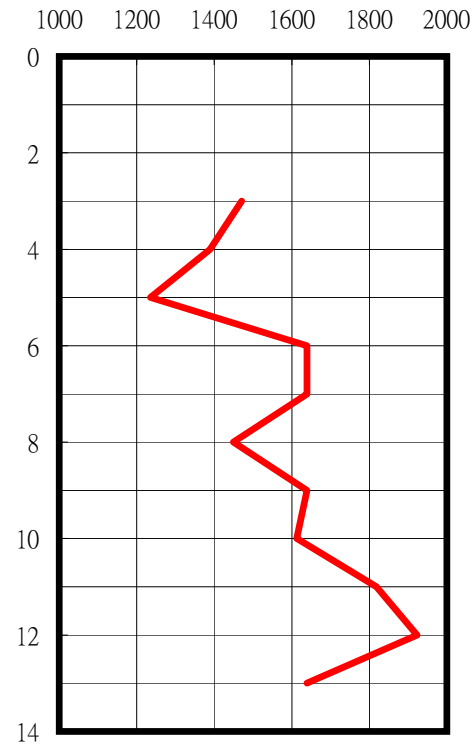
SPT-N



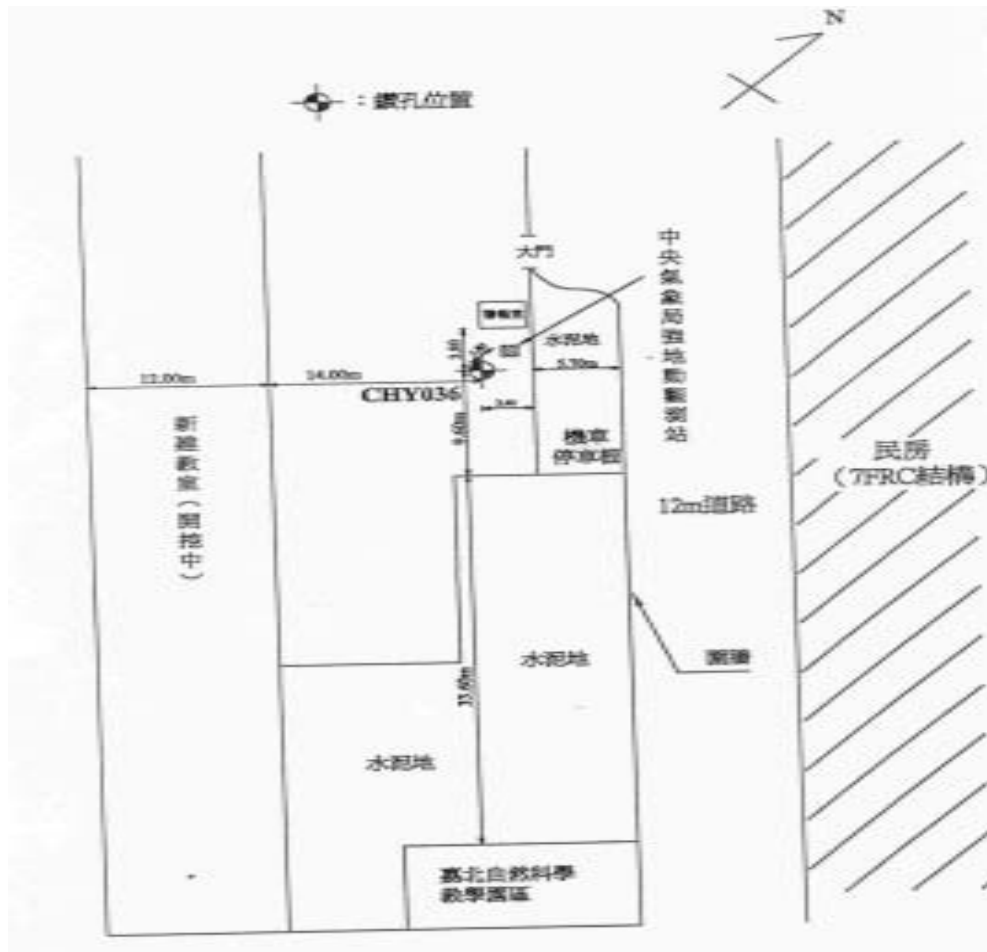
S-Wave



P-Wave



▽



本測站位於嘉北國小內左側警衛室旁，鄰近之大型結構物為隔校外12公尺道路之七樓RC結構民房，另校內距測站15公尺處有一12公尺寬之開挖工程，如示意圖所示，裝設地點並非為擋土牆結構，亦不與鄰近結構物相連。