

台南市協進國小(CHY067)

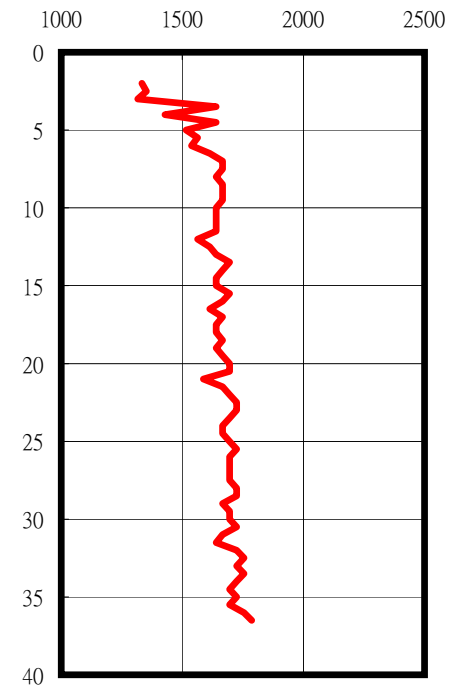
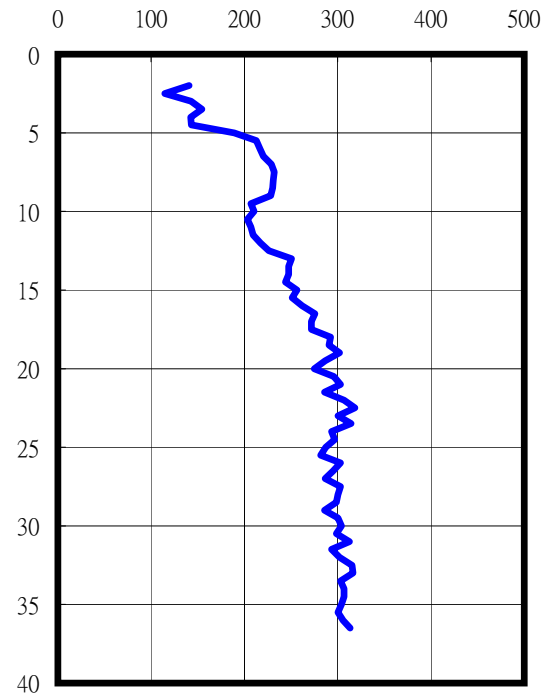
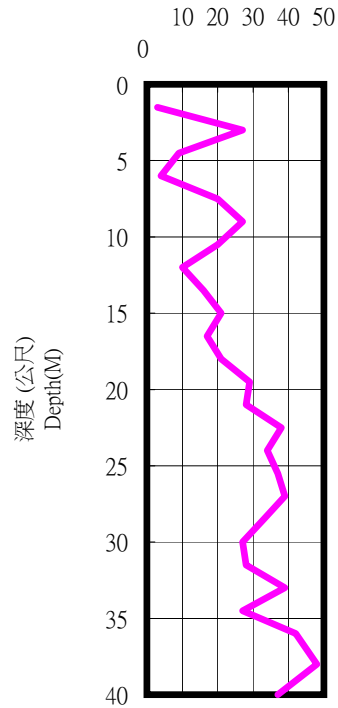
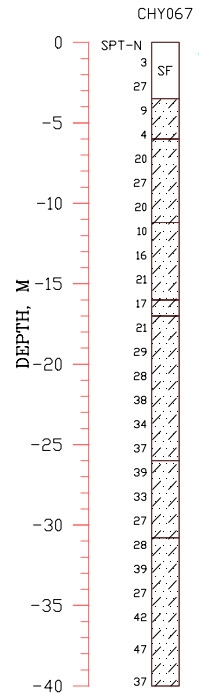
TM2

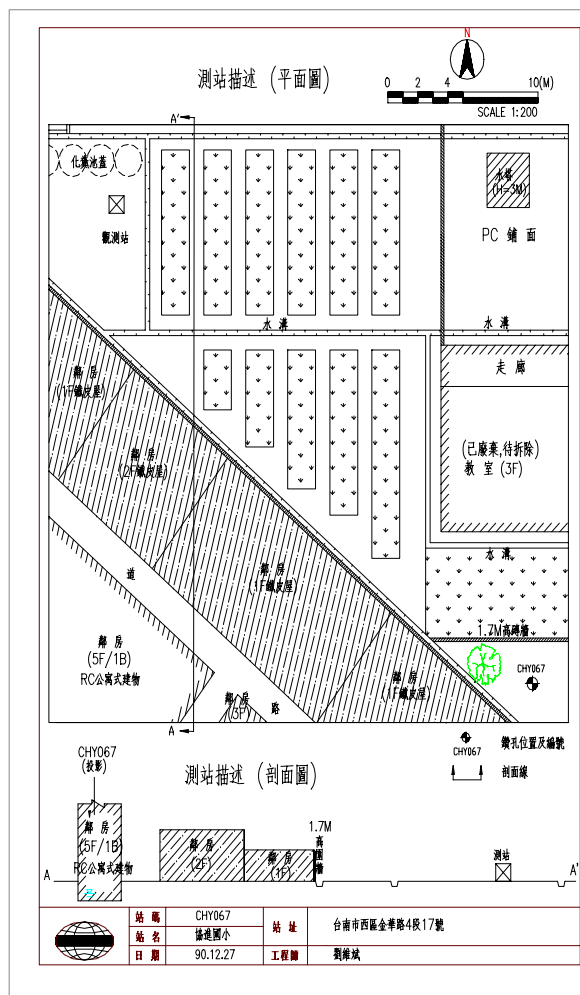
166378.0000 2544402.0000

SPT-N

S-Wave (m/sec)

P-Wave (m/sec)





1.本測站位於台南市協進國小西側校園內,測站東南側教室已廢棄不用,預計90.12.31拆除,測站南側之鄰房多為西北-東南向而建,為老舊之違章建築.

2.強震儀周遭因受場地限制,故將鑽孔移至測站東南側38米外空地施作.