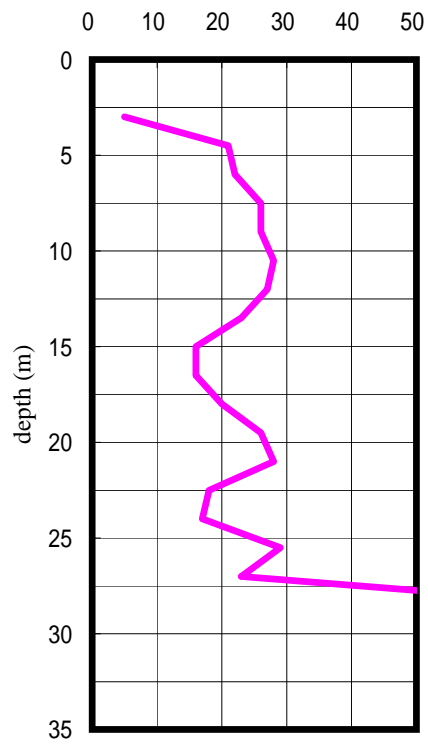


台南南師附小(CHY068)

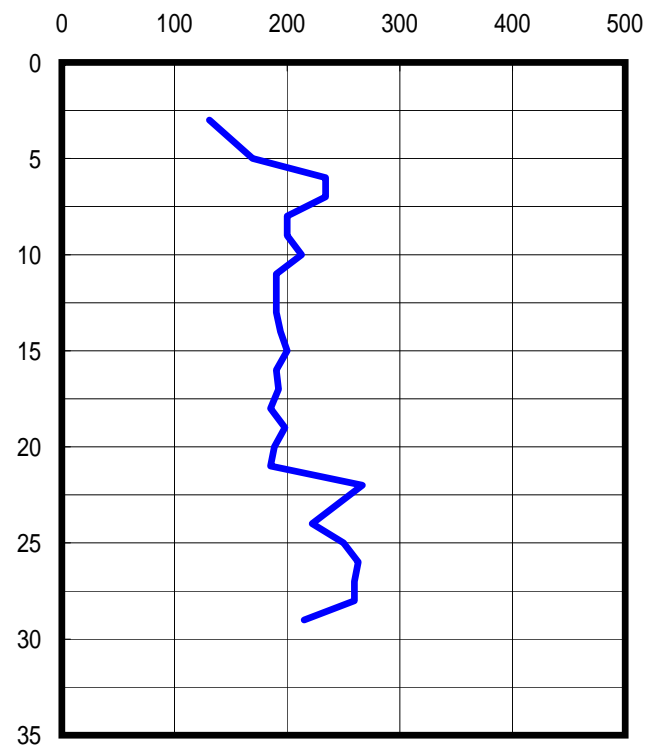
TM2

168031.5282 2543094.2095

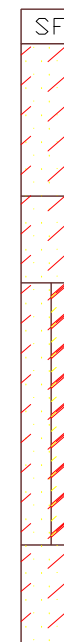
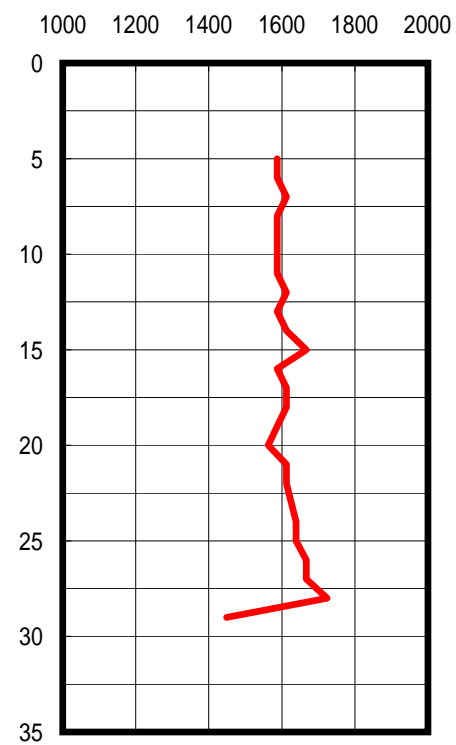
SPT-N

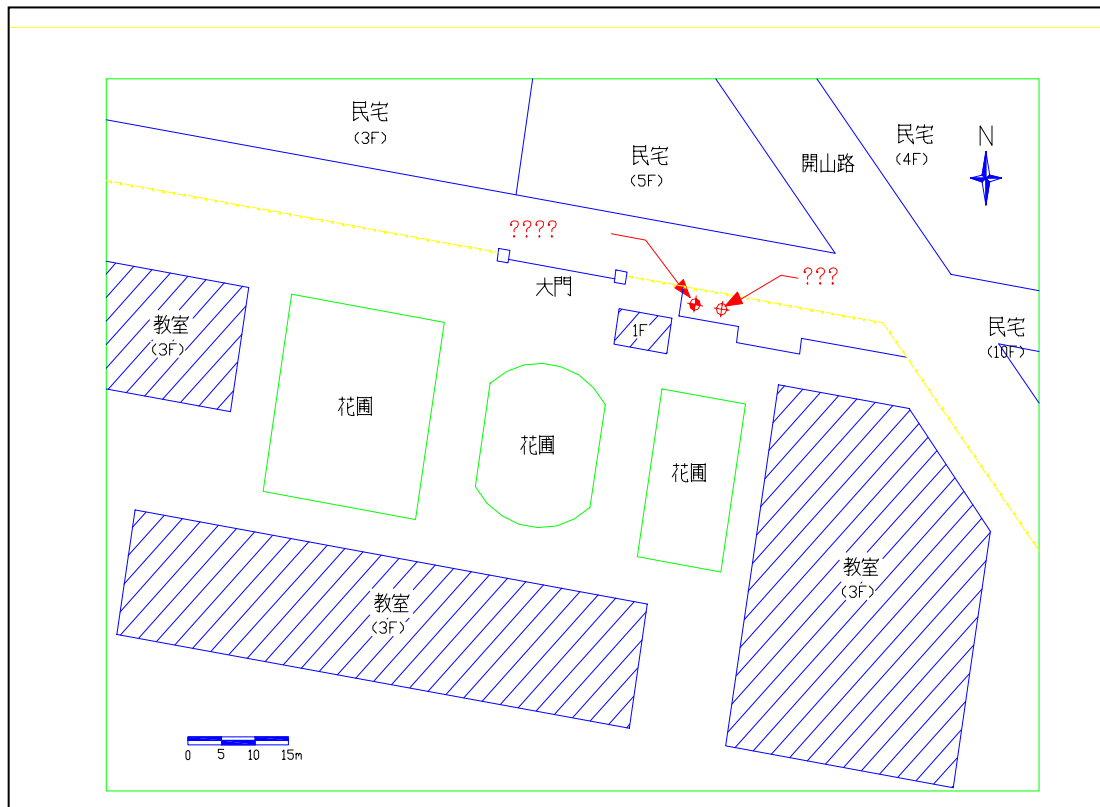


S-Wave



P-Wave





本測站強震儀設置於台南市中區樹林街隻台南師院附小內.本強震儀設置於該校大門左側警衛室後方圍牆邊.本測站北側為一排五層樓之集合住宅,東南側緊臨該校三層樓之教學大樓,南側與西側則相望該校三層樓之學生教室.本探測孔位緊鄰強震儀約三米,孔深為33米.