

嘉義縣太保國小(CHY095)

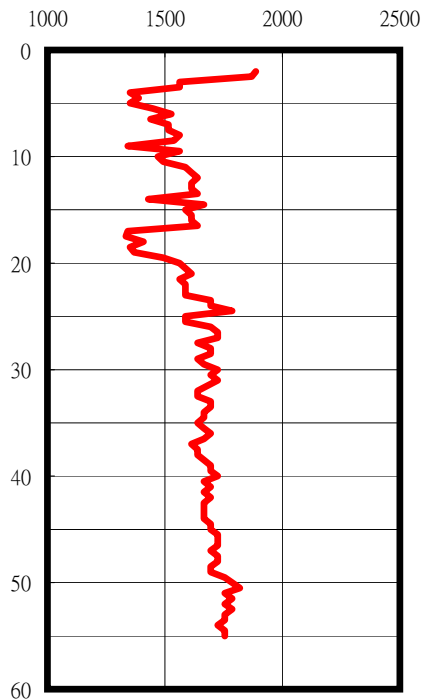
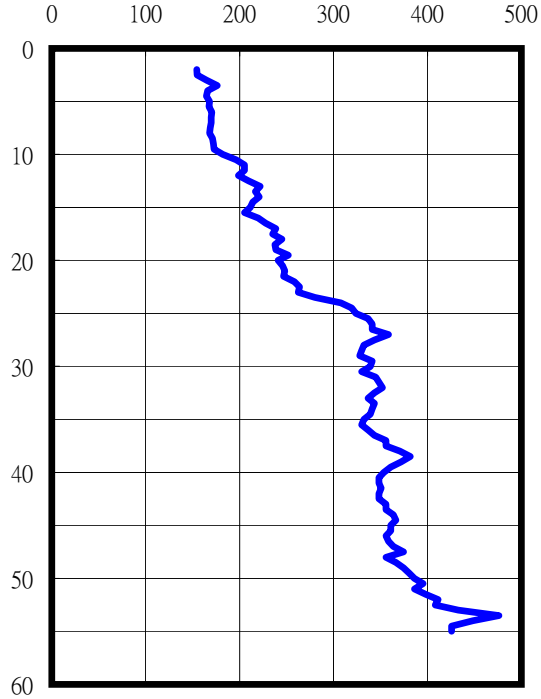
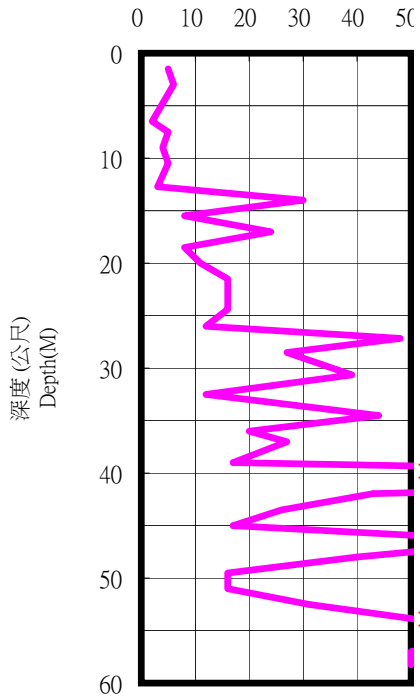
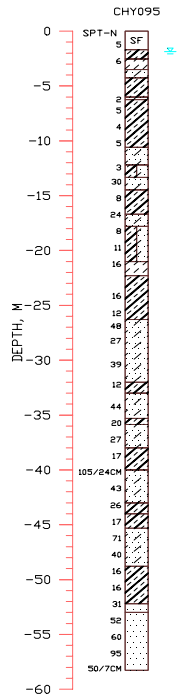
TM2

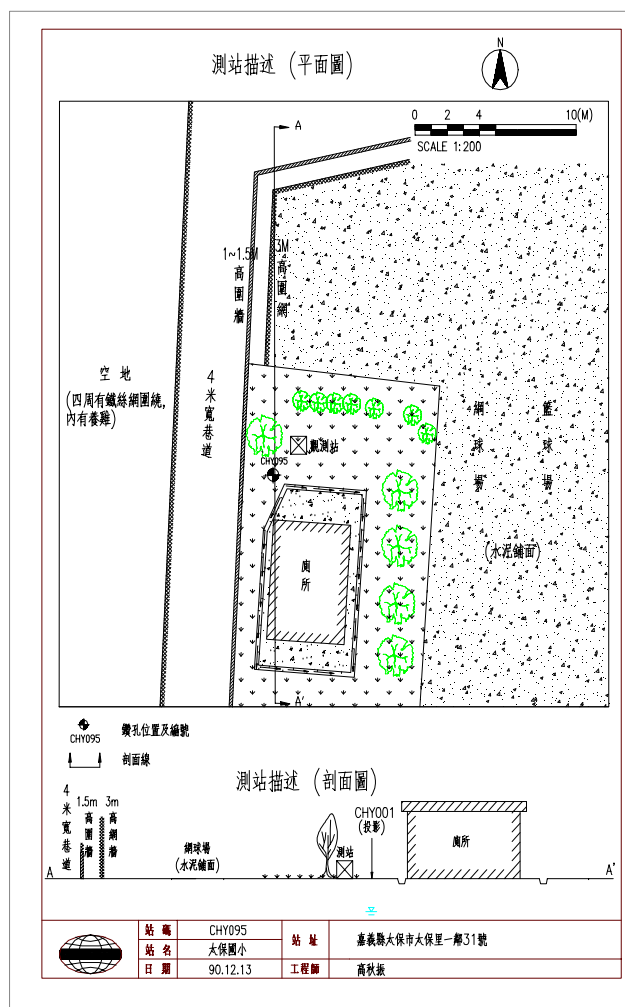
180763.0000 2595129.0000

SPT-N

S-Wave (m/sec)

P-Wave (m/sec)





- 1.本測站位於校園內運動場後方,及校園西北角一層樓之廁所旁.
- 2.測站西側約3米外為1-1.5米高之老舊圍牆(多處有破損),圍牆外為四米寬之巷道;測站東側及北側為水泥鋪面之網球場與籃球場等運動場地,四周地勢平坦.