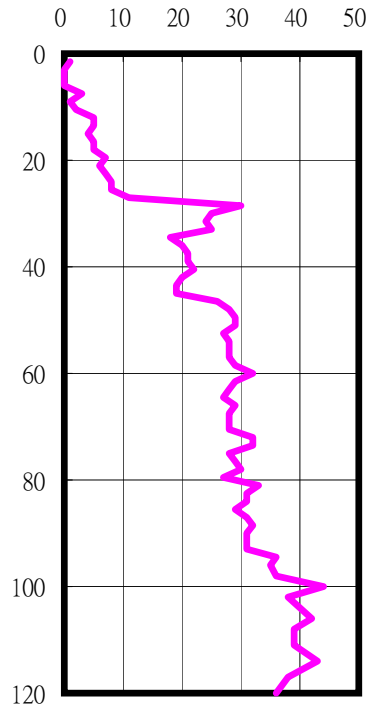


宜蘭新南國小(ILA041)

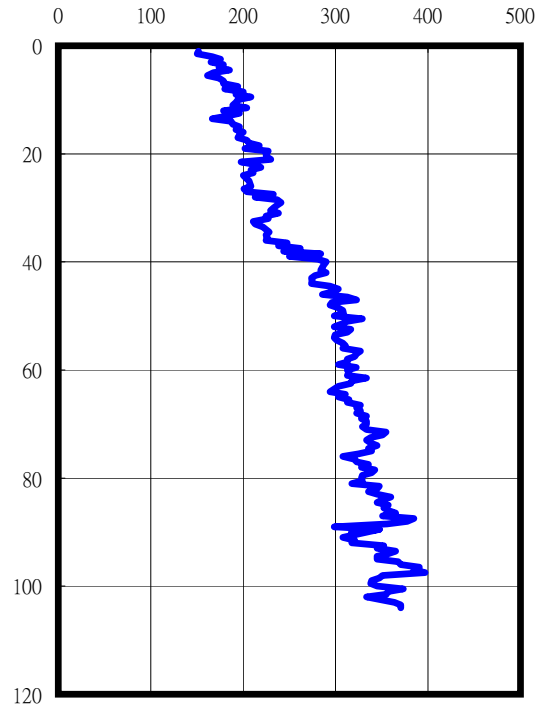
TM2

330024.0000 2735465.0000

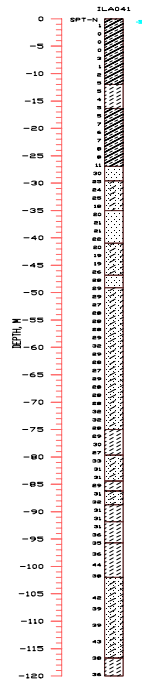
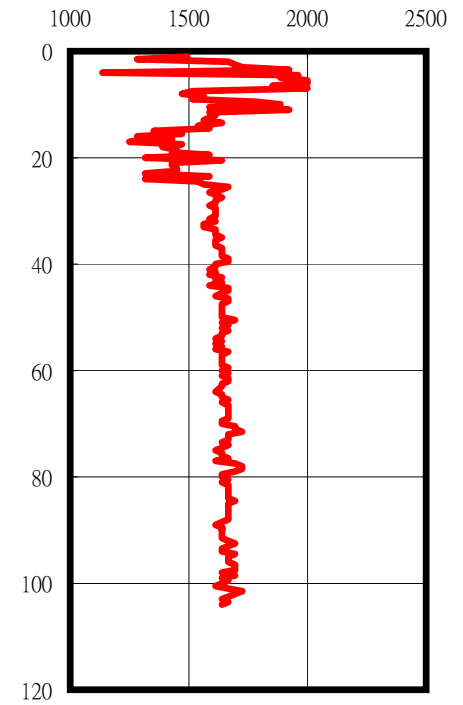
SPT-N



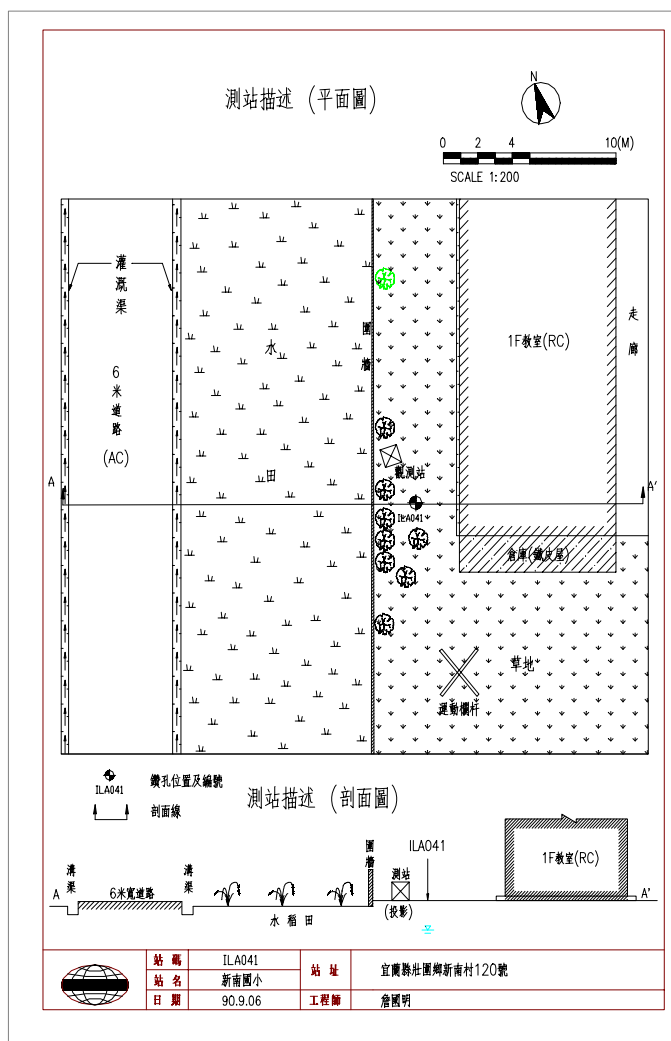
S-Wave (m/sec)



P-Wave (m/sec)



深度 (公尺)
Depth (M)



1. 牆震儀位在學校教室與圍牆之間，圍牆外為水稻田。
2. 本鑽孔不受40公尺深度限制，孔深120公尺，並未遭遇極密實之卵礫石承載層。