

慈雲寺(ILA048)

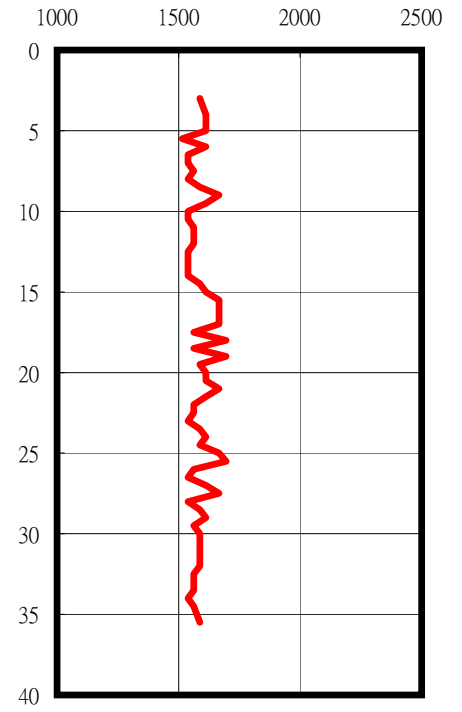
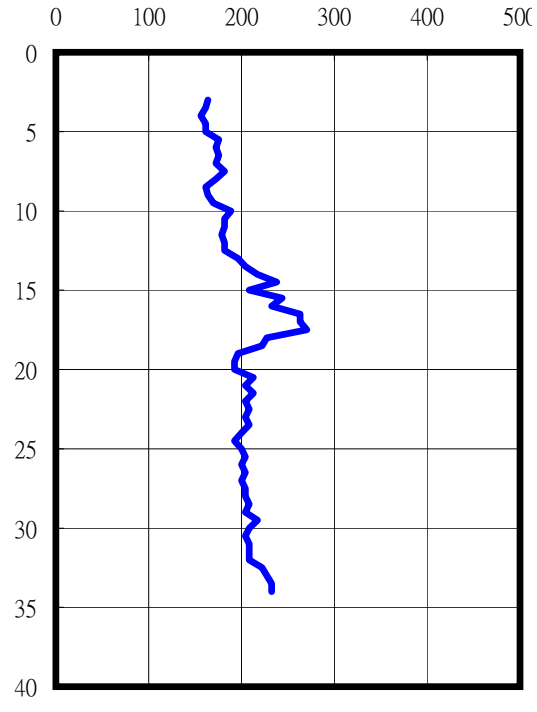
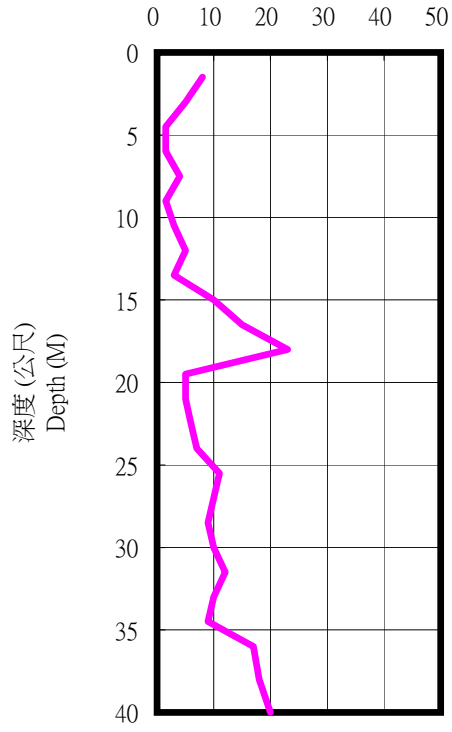
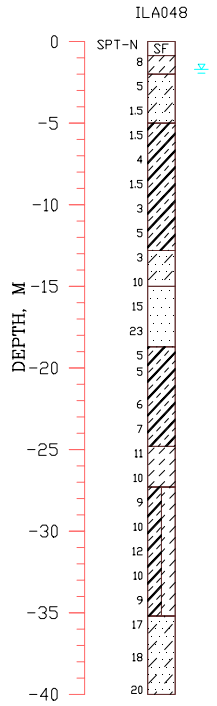
TM2

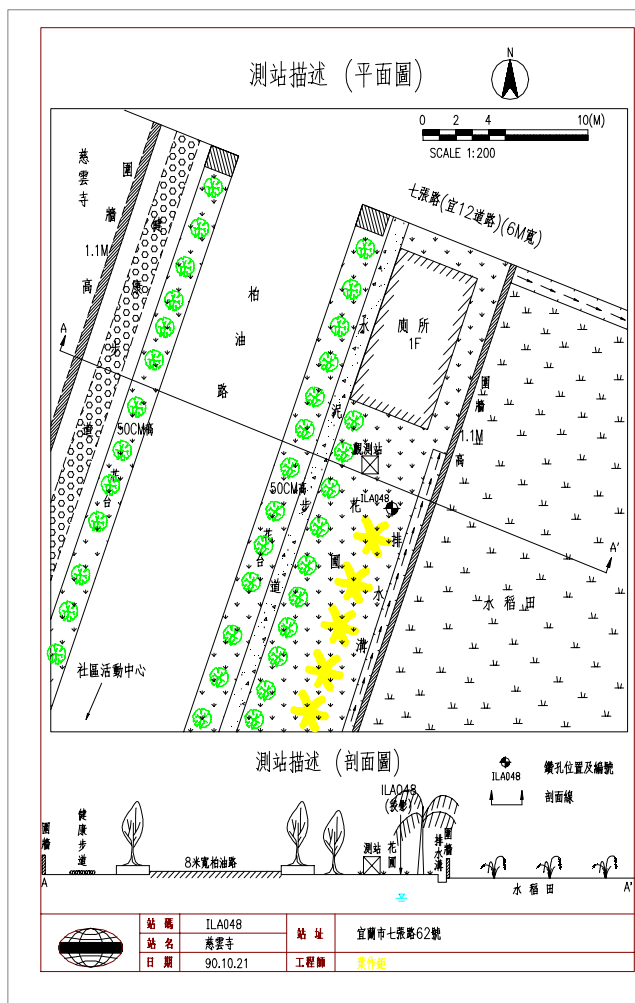
327007.0000 2740143.0000

SPT-N

S-Wave (m/sec)

P-Wave (m/sec)





1.測站位於慈雲寺旁小30公尺之花圃內，北側5公尺有5M\*9M公廁，東側為水稻田，高差為1公尺。

2.鑽孔離測站約2M，兩旁有椰子樹。