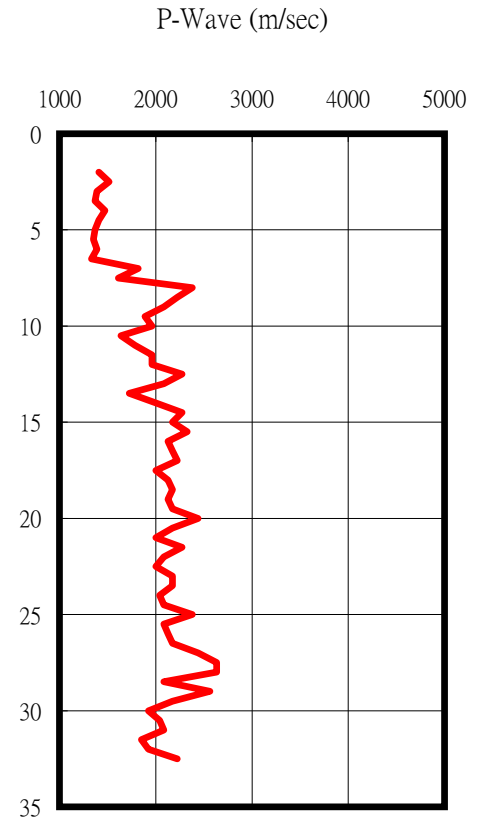
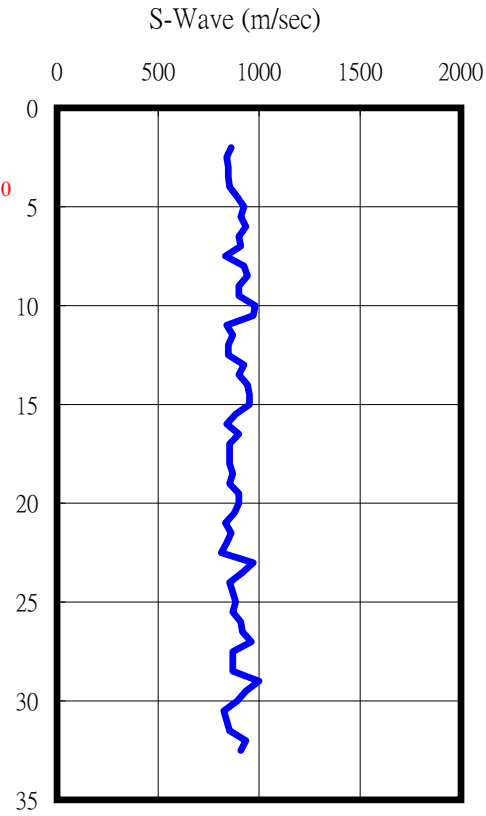
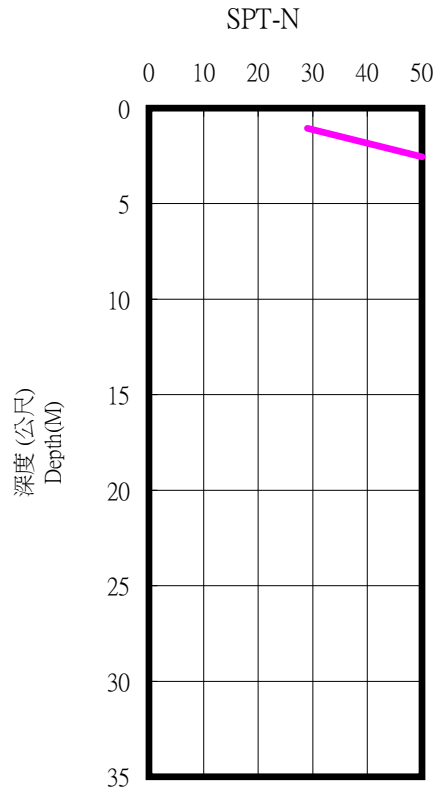
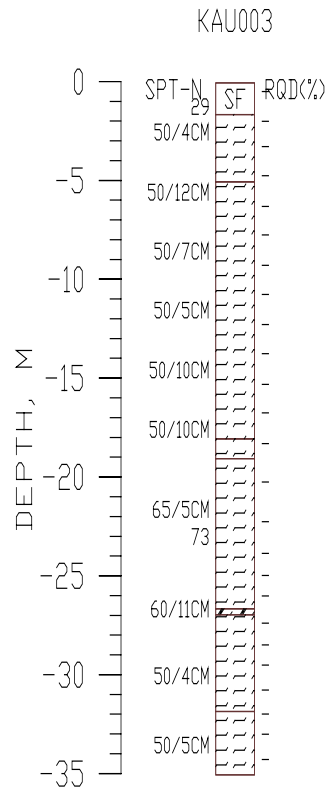
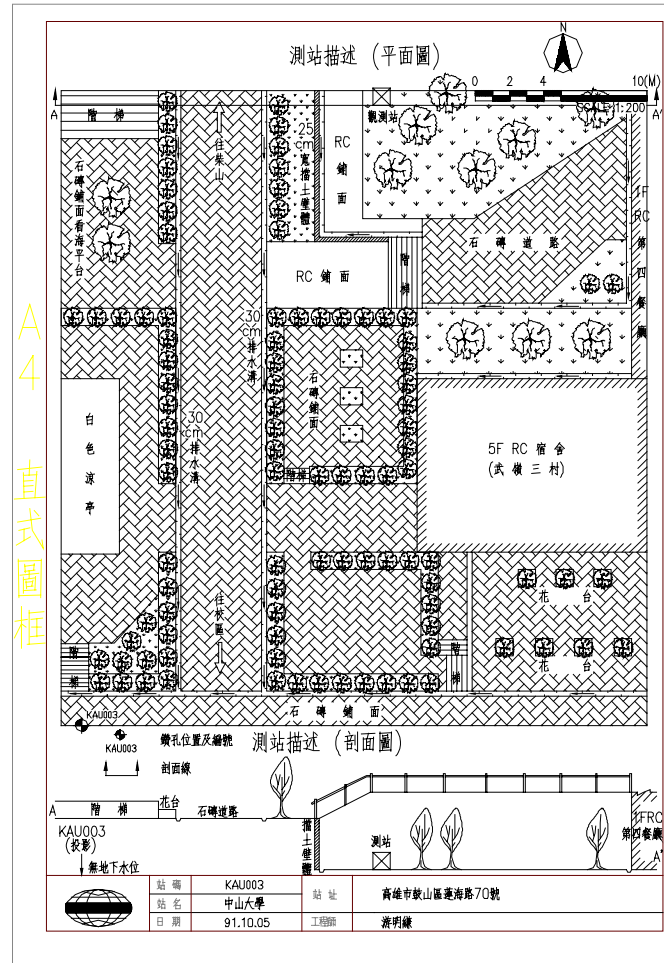


高雄市中山大學(KAU003)

TM2

173473 2503825





- 1.測站位於男生宿舍區第四餐廳中庭花園處，無破壞或沉陷等現象。
- 2.測站北側緊鄰7.5m高檔土牆，東側為1F RC餐廳。
- 3.測站與鑽孔高程差為1.5m，如剖面圖所示。