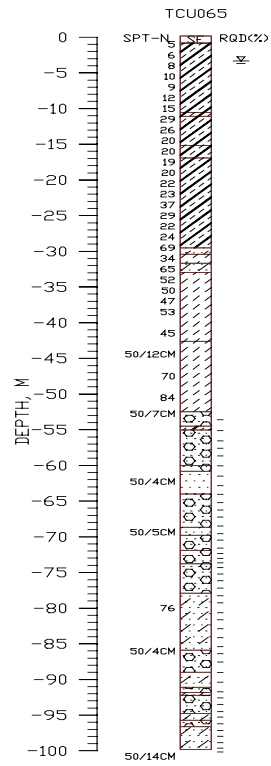


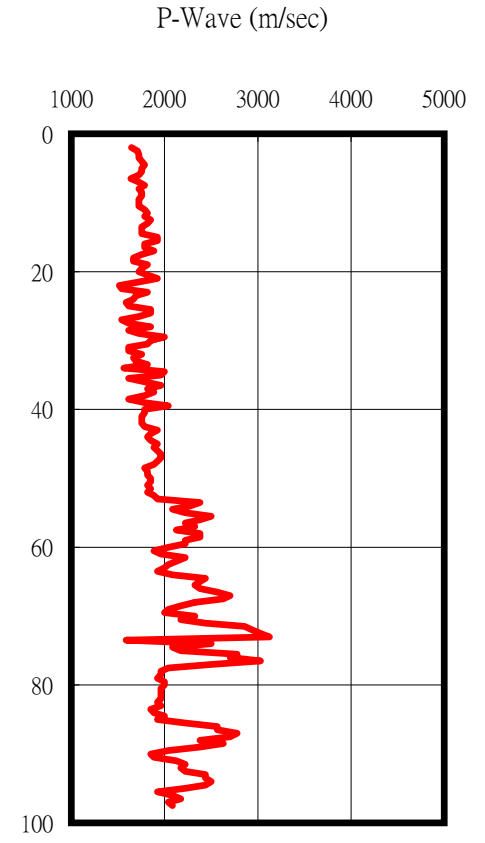
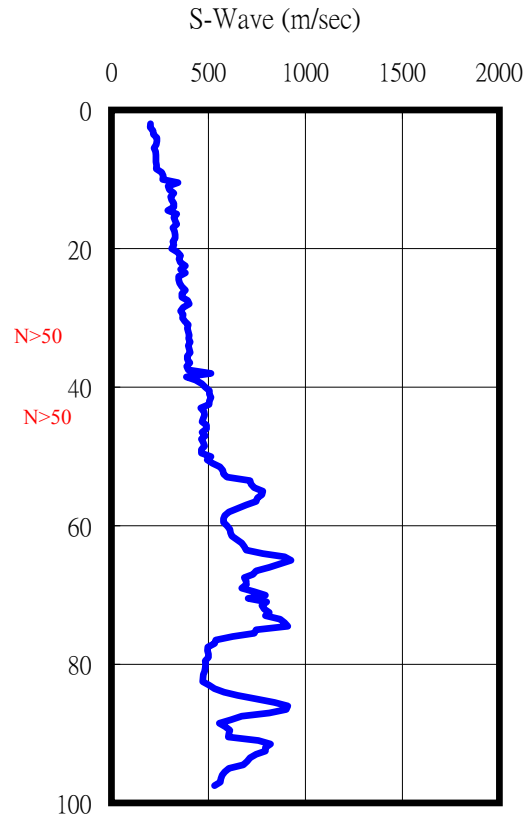
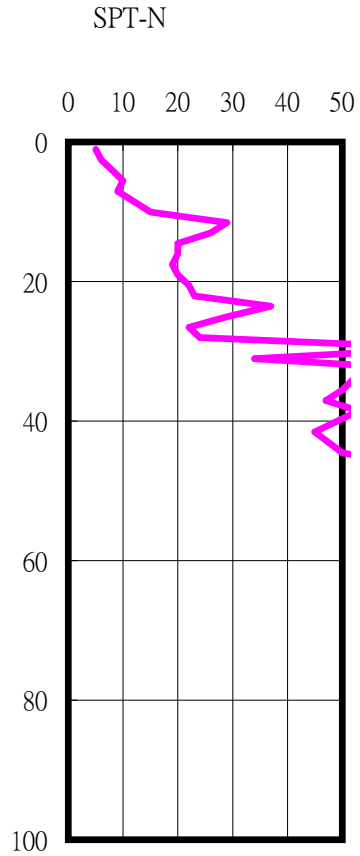
台中縣霧峰國小(TCU065)

TM2

218644 2661524

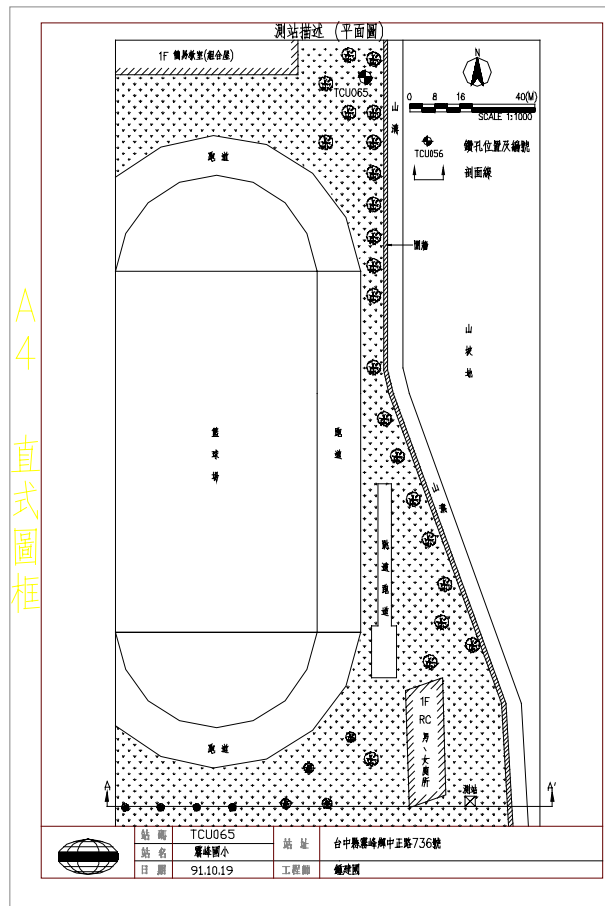


深度 (公尺)
Depth(M)

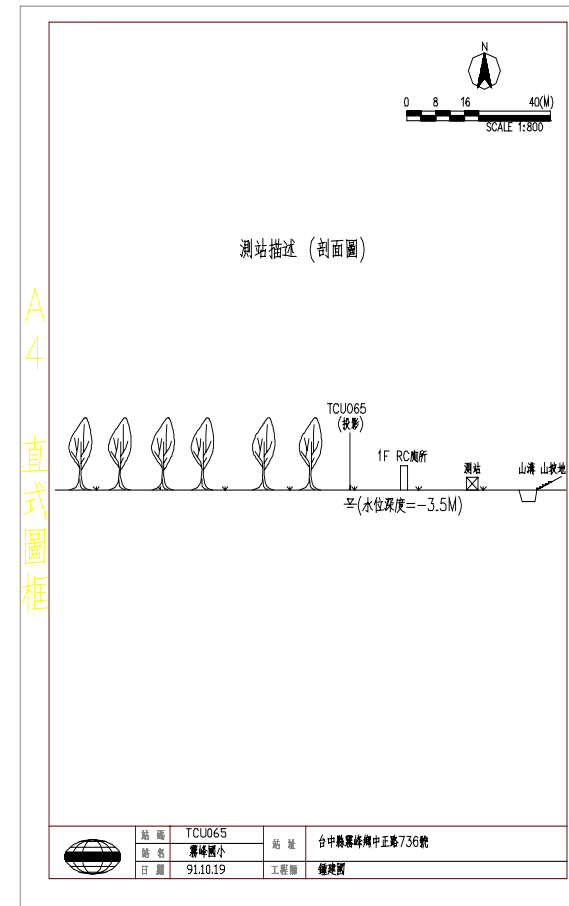




A4 直式圖框



A4 直式圖框



- 1.測站東側山坡緊鄰921地震車籠埔斷層破裂帶，坡地因斷層位移破裂而被抬昇近一公尺左右，山坡植生已乾枯，研判坡地上之地下水位可能因斷層位移作用而明顯劇降，此測站重新移位設置。
- 2.本校區經921震災後，業已成建完成，操場北側為震災後師生使用之簡易教室組合屋。